



ONLINE

For a free PDF download of the 2008 Nissan Altima Coupe **glass removal and replacement instructions**, visit GlassMagazine.com.

Vehicle information



Vehicle type: Two-door coupe

NAGS® numbers*: Windshield part number FW2822, third visor, solar; quarter glass FQ23535-36, encapsulated; and back glass FB23537, heated, antenna; FB23538, heated, diversity antenna

Helpful tools or supplies: The top molding is a wraparound-style part and might require replacing. You might also need a padded cold-knife blade for the back glass removal.

**With permission from National Auto Glass Specifications. Call NAGS at 800/551-4012 or visit www.nags.com.*

A. Windshield

Preparation

1. Always wear eye and hand protection when working with glass. Make sure you have the right glass and moldings and the urethane systems you are about to use are current. Windshield part number is FW2822.
2. Cover the front seats, floorboards, dash and steering wheel with a clean drop cloth or disposable plastic covers.
3. Drape a fender cover over the fender and tape up vulnerable areas on the vehicle to protect against damage. Tape up the defroster vents to prevent debris from falling into the openings.
4. Use a Ford mirror-removal tool or a small slot screwdriver to remove the rearview mirror.
5. Remove the windshield-wiper nut covers.
6. Remove the windshield-wiper nuts using a 13-millimeter wrench or socket. Move the wiper arm in an up-and-down motion to break it loose from the post, or use a wiper puller. **Caution:** Wipers can sometimes be hard to remove.

To avoid stressing the post, use a wiper puller.

7. The side moldings are one-piece and travel from the top of the fender to the top of the back glass. They are held in place by a metal molding-retention system attached to the wall of the pinchweld. If removed carefully, the moldings will be reusable. Use a pry tool to start removing the molding, and then carefully pry the rest off the retaining device. Follow along the top and set the moldings aside.

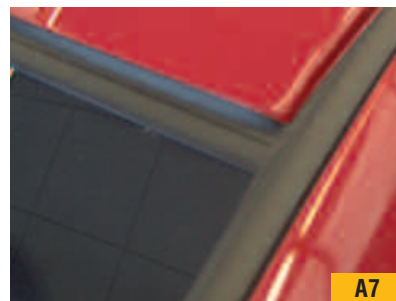
8. The top molding is a wraparound-style U-channel molding. NAGS does not indicate it will need to be replaced, but have one available just in case.

9. To remove the top molding, grasp and pull from the retaining device along the top of the vehicle, just like you removed the side moldings.

10. Remove the two retainers from the corners of the cowl by prying up the center of the retainer first and then the remainder.

11. There are three unique, plastic sandwich-type clips in the center leading edge of the cowl. Pinch the top and bottom, and slide off the leading edge.

12. Once you've removed the center portion of the cowl, slide the two decorative corner covers from under the fender, toward the engine compartment.



A7



A10



A11



A12



The author is president of Automotive Glass Experts in Sun Prairie, Wis. Write him at bberanek@aol.com.

By Bob Beranek

Note: Before beginning windshield removal, verify the new windshield is the correct one and the urethanes and primers are current. Never use outdated products as this could jeopardize the structural integrity of the vehicle and the safety of its passengers.

Removal

13. Make sure cutting blades are sufficiently sharp.
14. Before cutting out the windshield, remove contaminants from the glass and pinchweld to prevent contact with the urethane.
15. Use the cutting tools of your choice to remove the glass from the adhesive bead. **Note:** When using a power tool, lubricate the cutting area with plain water. Spray the top, sides and bottom; then make your cuts.
16. Take the windshield out of the opening using a set of vacuum cups. **Caution:** Make sure the vacuum cups do not overlap a crack in the glass.
17. Lift the glass and place it on a windshield stand or suitable workstation.

Installation

18. After cutting the windshield out, remove contaminants such as dirt, moisture and debris from the pinchweld. Clean the dashboard.
19. Dry fit the new glass to the opening. Mark your glass using a grease pencil or molding-retention tape.

20. Place your vacuum cups on the windshield in the appropriate location.

21. Set the windshield onto the old urethane.
22. With the windshield resting in the opening, make sure it is in the right spot.
23. Adjust both sides to the correct setting, marking the passenger's side, then the driver's side. Lift the glass and place it on a windshield stand or suitable workstation.
24. Follow the urethane manufacturer's recommendations for installation.
25. Clean the inside of the windshield using a urethane manufacturer-recommended product. **Note:** Do not touch the bonding area of the windshield after cleaning, prepping or priming it.
26. Wear powder-free Nitrile gloves to protect against chemicals.
27. Apply the glass prep and primer following the urethane manufacturer's recommendations.
28. Using the tool of your choice, remove the original urethane bead, leaving 1-2 millimeters of existing urethane on the pinchweld. **Note:** Make sure there are no contaminants, and do not touch the pinchweld after prepping the area.
29. Apply the pinchweld primer only to the areas where needed, and follow the urethane manufacturer's recommendations. **Note:** Allow preps and primers to dry as recommended by the urethane manufacturer.
30. Apply a triangular bead of urethane to the same path as

the freshly cut urethane on the pinchweld. Before cutting your V-notch, cut the tip off of your nozzle with a nozzle-cutter. With the cut nozzle, measure to the top of the roofline, and at $\frac{1}{16}$ -inch higher than the roofline, make a mark on the nozzle with a pen or marker. Notch the nozzle up to the marked line; this will give you the appropriate triangular bead.

31. Lift the windshield from the windshield stand or workstation using vacuum cups. Set the windshield on the urethane at the mark you made during dry fit. Lower the driver's side of the windshield onto the urethane and line it up with the dry-fit mark; it is now in place.

32. The windshield is now ready to be decked. Press firmly to ensure a good seal.

33. Before re-installing the parts, check for leaks. Use a leak detector to go over the perimeter of the windshield. If you find a leak, apply pressure to the spot to ensure the glass makes contact with the wet urethane.

34. Re-install the removed parts in reverse order.

35. Allow the urethane to cure according to the urethane manufacturer's recommended cure time before returning the vehicle to the customer. **Warning:** Disregarding the safe drive-away time your urethane manufacturer recommends could jeopardize the structural integrity of the vehicle and the safety of its passengers.

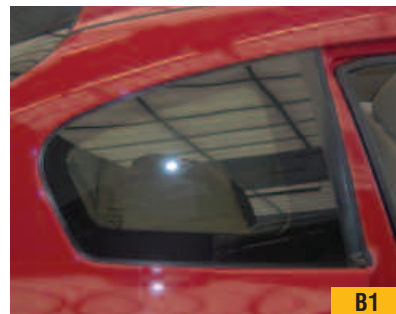
36. You have completed the removal and replacement of the windshield.

B. Quarter glass

Removal

1. Make sure you have the right glass. Quarter glass part number is FQ23535-36. It is encapsulated and can be cut out using a power tool, if your goal is to salvage the part.

2. Use the tool of your choice to cut the front edge of the glass from the vehicle exterior and the remainder from the interior. **Note:** When using a power tool, lubricate the cutting area with plain water. Spray the top, sides and bottom; then make your cuts.



Installation

3. After cutting the quarter glass out, remove contaminants such as dirt, moisture and other debris from the pinchweld.

4. Dry fit the new



glass to the opening. Mark your glass using a grease pencil or molding-retention tape. Using vacuum cups, lift the glass and place it on a windshield stand or suitable workstation.

5. Installation will require plastic-to-metal bonding. Follow the urethane manufacturer's recommendations accordingly.

6. Clean the inside of the quarter glass using a urethane manufacturer-recommended product. **Note:** Do not touch the bonding area of the quarter glass after cleaning, prepping or priming it.

7. Wear powder-free Nitrile gloves to keep off chemicals.

8. Apply the glass prep and primer following the urethane manufacturer's recommendations.

9. Using a pinchweld scraper, remove as much of the original urethane as the urethane manufacturer recommends.

10. Apply the pinchweld primer only to the areas where needed, and follow the urethane manufacturer's recommendations. **Note:** Allow preps and primers to dry as recommended by the urethane manufacturer.

11. Apply a triangular bead of urethane to the same path as the freshly cut urethane on the pinchweld. Before cutting your V-notch, cut the tip off of your nozzle with a nozzle-cutter. With the cut nozzle, measure to the top of the roofline, and at $\frac{1}{16}$ -inch higher than the roofline and bodyline, make a mark on the nozzle with a pen or marker. Notch the nozzle up to the marked line; this will give you the appropriate triangular bead.

12. Place your vacuum cups on the quarter glass in the appropriate location.

13. Lift the quarter glass from the windshield stand or workstation using vacuum cups.

14. Set the quarter glass in the opening.

15. It is now ready to be decked. Press firmly to ensure a good seal.

16. Before re-installing the parts, check for leaks. Use a leak detector to go over the perimeter of the quarter glass. If you find a leak, apply pressure to the spot to ensure the glass makes contact with the wet urethane.

17. Re-install the removed parts in reverse manner.

18. Allow the urethane to cure according to the urethane manufacturer's recommended cure time before returning the vehicle to the customer.

19. You have completed the removal and replacement of the quarter glass.

C. Back glass

Removal

1. Make sure you have the right glass. Back glass part numbers are FB23537 and FB23538.

2. Remove the two interior quarter panels to facilitate access to the electrical connectors. Using your fingers, grasp the top corner of the panel and pull it away from the body panel.

3. Disconnect the electrical connectors. There is one on the driver's side and two or three on the passenger's side, depending on the back glass features.



4. The exterior molding is an underside molding similar to a pre-applied adhesive system, or PAAS-type molding. There is no need to remove it.

5. Cut out the back glass. The vehicle has an exposed pinchweld wall, but the glass is far enough away to allow you to cut it out with a cold knife or power tool. **Note:** To prevent damage to the vehicle, protect the pinchweld wall with tape and use a padded cold-knife blade during cutout.

Installation

6. After cutting the back glass out, remove contaminants such as dirt, moisture and other debris from the pinchweld.

7. Dry fit the new glass to the opening. Mark your glass using

a grease pencil or molding-retention tape. Using vacuum cups, lift the glass and place it on a windshield stand or suitable workstation.

8. This installation will require plastic-to-metal bonding. Follow the urethane manufacturer's recommendations accordingly.

9. If the glass is being removed and re-set, apply an after-market underside molding to replace the one you cut off during removal.

10. Clean the inside of the back glass using a urethane manufacturer-recommended product. **Note:** Do not touch the bonding area of the back glass after cleaning, prepping or priming it.

11. Wear powder-free Nitrile gloves to keep off chemicals.

12. Apply the glass prep and primer following the urethane manufacturer's recommendations.

13. Using a pinchweld scraper, remove as much of the original urethane as the urethane manufacturer recommends. **Note:** Before removing the old urethane, make sure there are no contaminants and do not touch the pinchweld after prepping the area.

14. Apply the pinchweld primer only to the areas where needed, and follow the urethane manufacturer's recommendations. **Note:** Allow preps and primers to dry as recommended by the urethane manufacturer.

15. Apply a triangular bead of urethane to the same path as the freshly cut urethane on the pinchweld. Before cutting your V-notch, cut the tip off of your nozzle with a nozzle-cutter. With the cut nozzle, measure to the top of the roofline, and at $\frac{1}{8}$ -inch

higher than the roofline and bodyline, make a mark on the nozzle with a pen or marker. Notch the nozzle up to the marked line; this will give you the appropriate triangular bead.

16. Place your vacuum cups on the back glass in the appropriate location.

17. Lift the back glass from the windshield stand or workstation using vacuum cups.

18. Set the back glass in the opening.

19. It is now ready to be decked. Press firmly to ensure a good seal.

20. Before re-installing the parts, check for leaks. Use a leak detector to go over the perimeter of the back glass. If you find a leak, apply pressure to the spot to ensure the glass makes contact with the wet urethane.

21. Re-install the removed parts in reverse manner.

22. Check the operation of the back glass' electrical components.

23. Allow the urethane to cure according to the urethane manufacturer's recommended cure time before returning the vehicle to the customer.

24. You have completed the removal and replacement of the back glass. **G**