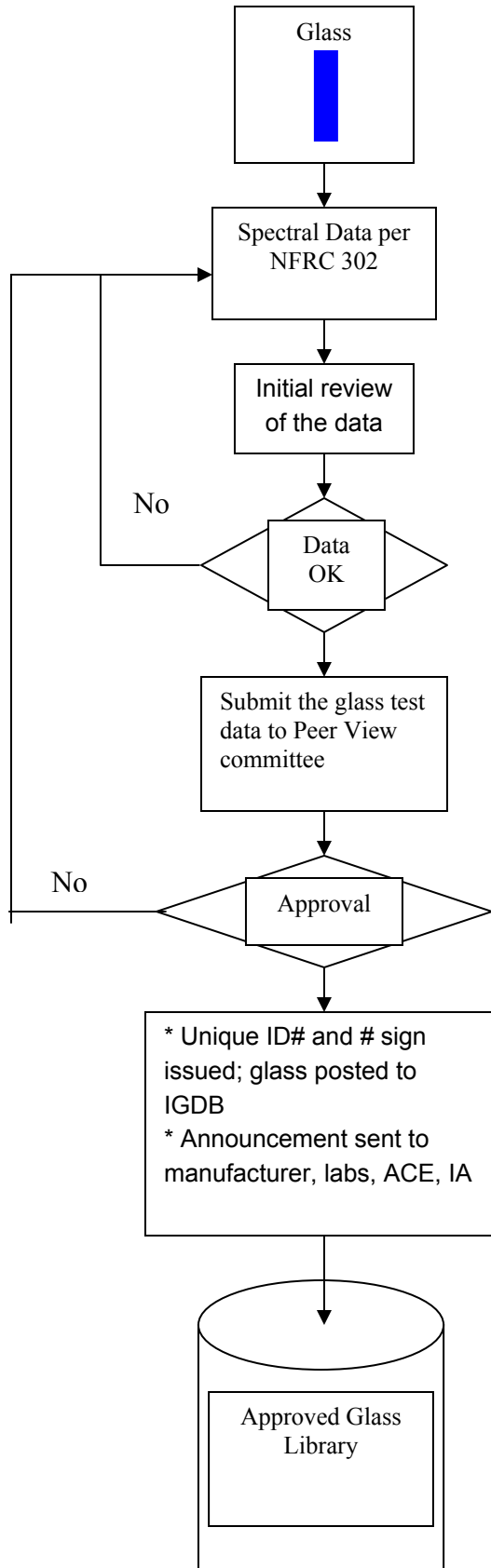


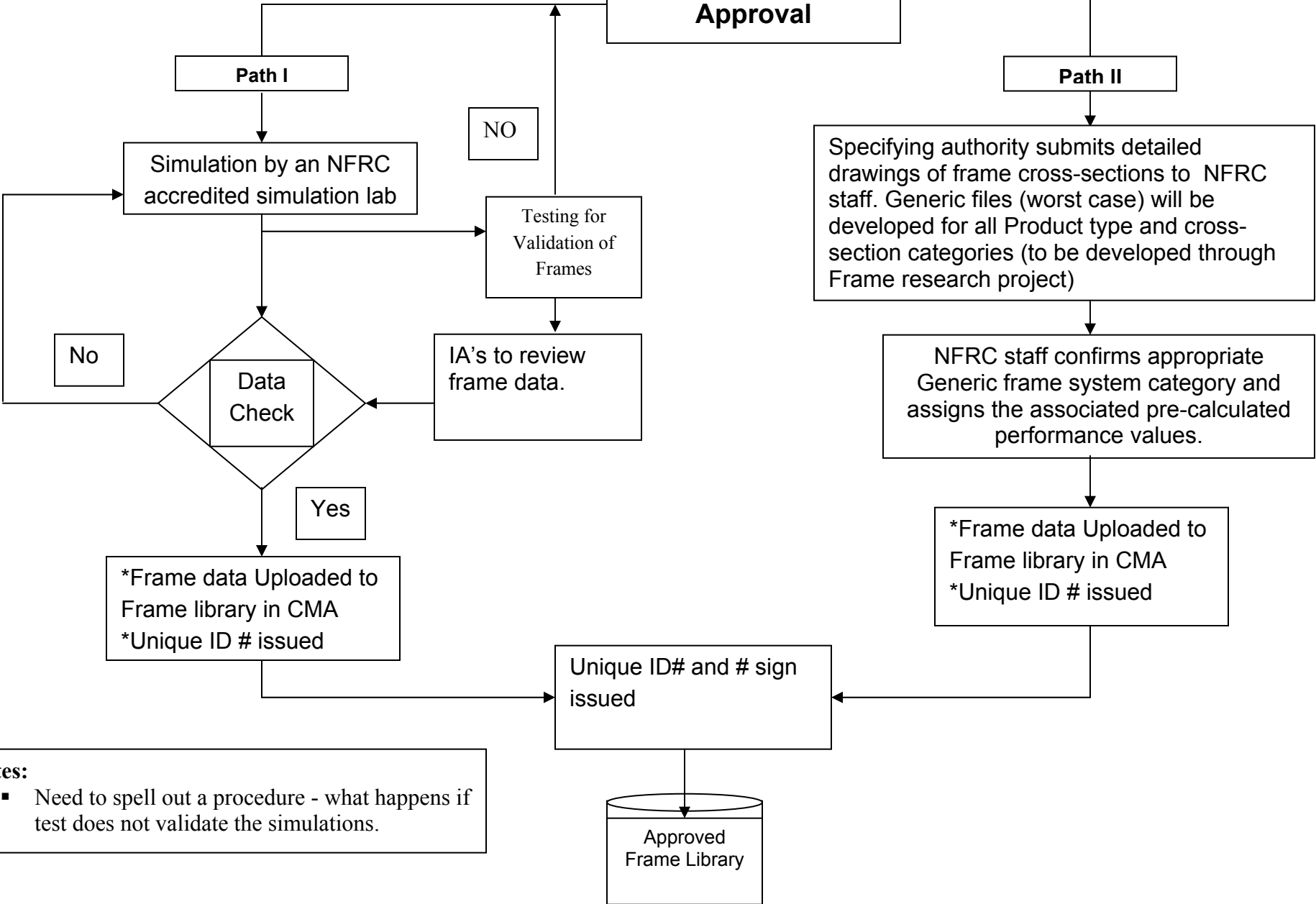
Date: 11-20-2006

# Glass Component Approval



Date: 11-20-2006

# Frame Component Approval

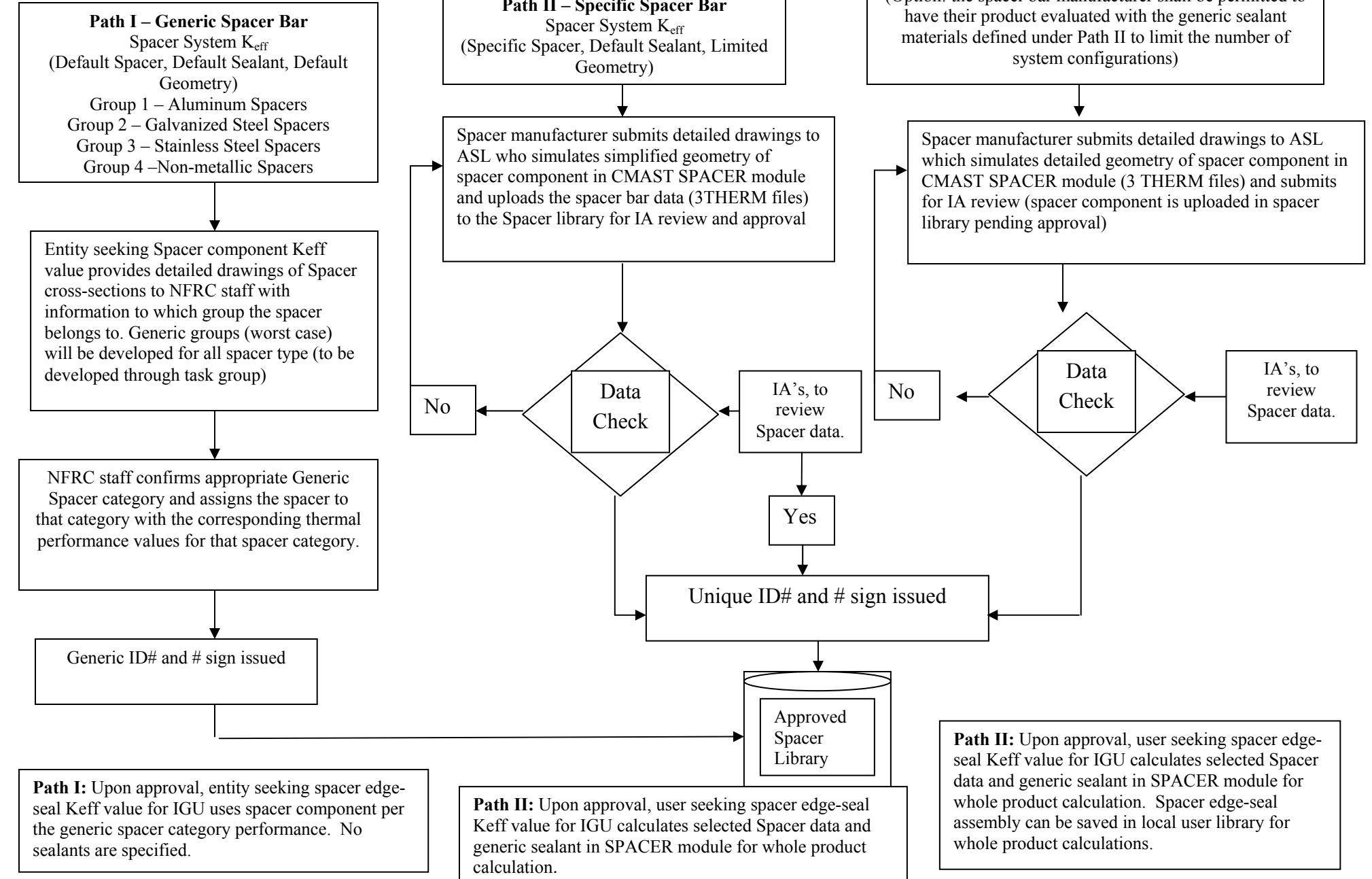


**Notes:**

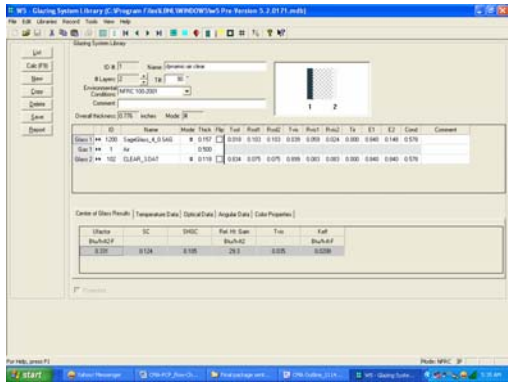
- Need to spell out a procedure - what happens if test does not validate the simulations.

Date: 07-24-2007

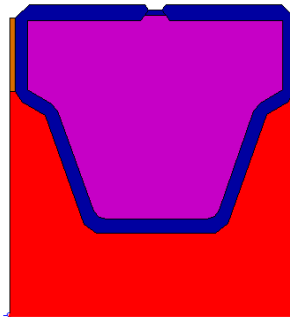
## Spacer Component Approval



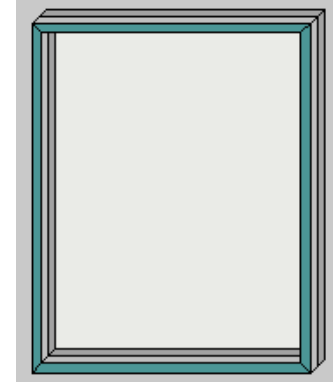
### Glazing System



### Spacer System



### Frame System



ACE - Contracted by Specifying Authority

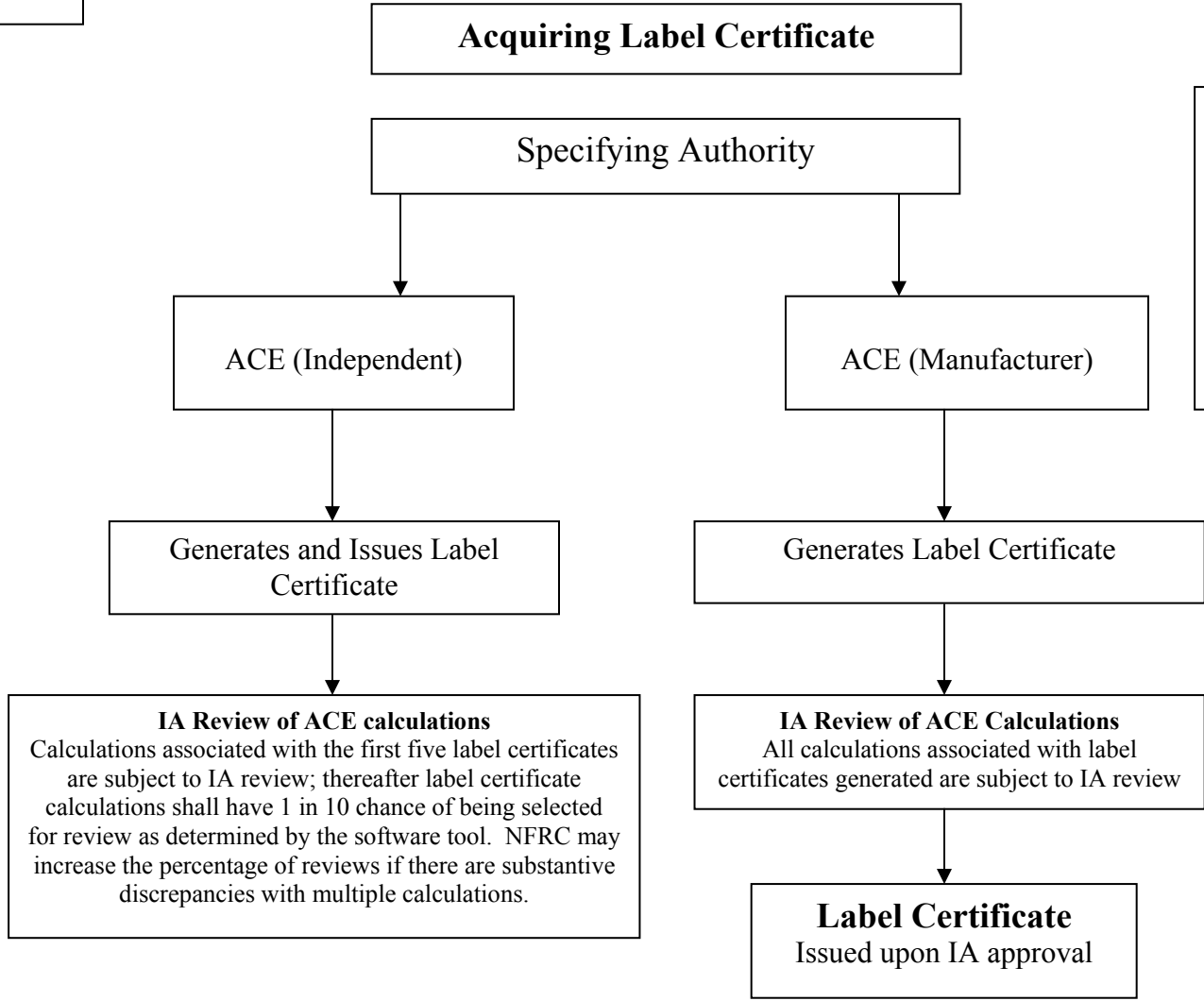
Bid Report

Whole Product Calculation

NFRC Label Certificate

CMA Software Tool's  
Certified Products Directory

Date: 08-28-2007



*Note: IA shall issue a Notice of Non-Compliance to the Ace and the Specifying Authority for any discrepancies identified with any calculations in the label certificate. The Ace shall take corrective action within 30 days; otherwise, label certificate is revoked.*